



SOCIAL IMPACT in EDINBURGH



**SCOTTISH
FIRE AND RESCUE SERVICE**
Working together for a safer Scotland

• EDINBURGH •
THE CITY OF EDINBURGH COUNCIL

hub
South East Scotland

NHS
Lothian

PROJECTS

£244m
Complete

Salisbury Court Health Centre
Castlebrae Community Campus

Inclusive Edinburgh Centre

Forest Kindergartens

Queensferry High School

Leith Meanwhile

Pennywell All Care Centre

Allermuir Health Centre

Royal Edinburgh Campus (Phase 1)

James Gillespie's High School Campus

Royston Care Home

Free School Meals

Nurseries & Blackhall Gym

Newbridge Fire & Rescue Station

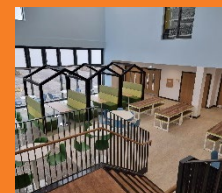
James Gillespie's Primary - Gym, Classrooms & Nursery

Rising Rolls School Extensions: Year 1-7

Wester Hailes Healthy Living Centre

East Neighbourhood Centre & Library

Drumrae Library & Hub



COMMUNITY BENEFITS DELIVERED

On projects undertaken in Edinburgh, including with the City of Edinburgh Council, NHS Lothian and Scottish Fire & Rescue Service, we have delivered a range of Community Benefits:




267
NEW
JOBS
created

61



Professional
Employment,
including
GRADUATES


18,360



School, Site & FE
VISITS

Tailored visits are arranged locally to best suit young people's needs. Whether it's Safety Sam presentations in Primary Schools or a tour of a building under construction for architecture students at university, these visits ensure maximum potential is realised from having construction projects in the community.

222



New and Existing
**TRAINEES &
APPRENTICESHIPS**

Work placements are arranged locally so pupils and students can gain valuable experience in a live site environment.

Placements are also offered within our supply chain, e.g. with designers, promoting the range of industry careers offered.

We are increasingly aiming to widen the breadth of experience to show the diverse opportunities available in the industry.

2346
School, Site
& Further
Education
**WORK
PLACEMENT
DAYS**

EXCEEDING TARGETS



We set ourselves ambitious targets in relation to community benefits and in Midlothian, we are exceeding these:

1509

More days provided for
WORK PLACEMENTS

224

More
NEW JOBS

15k+

More
VISITS

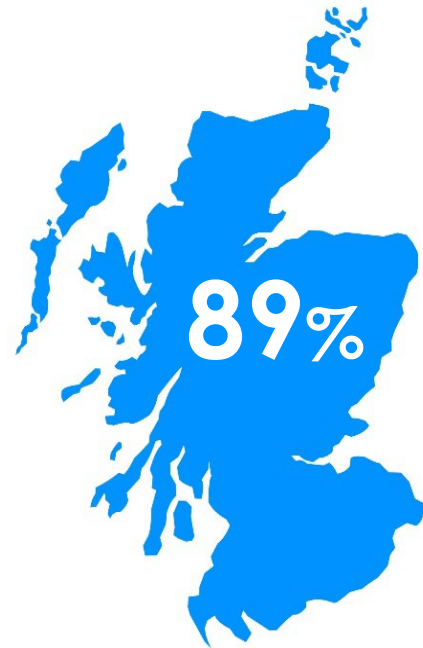
122

More new & existing
APPRENTICESHIPS

SCOTTISH SMES SUPPORTED THROUGH INFRASTRUCTURE PROJECTS IN EDINBURGH

We're keen to ensure that a local supply chain is used during construction, with Meet the Buyer events held to give small businesses and individuals the opportunity to get involved.

89% of construction work packages on completed projects in Edinburgh, were by Scottish SMEs.



NEW SOCIAL IMPACT MEASUREMENTS



All new projects since April 2020 have been developed and tendered using social impact measurements (SFT TOMs). The social impact is reported and measured in the Social Value Portal (SVP) system and when projects are complete, we can provide detailed reports on the social impact being delivered locally.

Many of the categories are similar, including curriculum support, site visits etc. however the measurements may vary under SFT TOMs eg. curriculum support was number of pupils under the original Community Benefit KPIs however it is recorded as staff hours with SFT TOMs.

All future projects will be reported using these new measurements and we will continue to provide Clients with data which supports their own internal reporting.



SUPPORTING LOCAL COMMUNITY ACTIVITIES



On all projects we aim to ensure local communities benefit from work being delivered in their area. This includes supporting local events and groups and can take many forms including donations of cash, equipment, expertise and time.

Here are just some examples of how communities in Edinburgh have benefited:

- ✓ Donating football strips to the Queensferry High School team.
- ✓ **Sponsoring local fireworks close to the Royal Edinburgh Campus for several years in a row.**
- ✓ Organising free local car wash days around the James Gillespie's School Campus site.
- ✓ **Sponsoring carol singing at the Usher Hall.**
- ✓ Donating to Food banks in Firhill and North West Edinburgh.
- ✓ **Donating £500 to Wardie Primary's Sunshine Room.**
- ✓ Donation of cash and staff time to Freshstart, to create festive foodbanks in Edinburgh.
- ✓ **Sponsoring a book about the history of James Gillespie's High School.**
- ✓ Donating to Edinburgh Napier Civil Engineering society to allow the purchase of PPE for students.
- ✓ **Sponsorship of £3,000 to the Queensferry Rowing Club, Gala Day and Christmas event.**
- ✓ Donating shopping vouchers for local stores in Pennywell as competition prizes.
- ✓ **Sponsoring Spartan FC's Summer Quest.**
- ✓ Building a wooden step for Cramond Nursery to help younger children access recycling bins.
- ✓ **Donating two timber sheds to James Gillespie's Primary.**

SOCIAL IMPACT ON CASTLEBRAE COMMUNITY CAMPUS



Donations of Time & Money

- ✓ £500 to the School to buy tablets for pupils.
- ✓ £620 to the School for new CDT equipment.
- ✓ £500 for new football strips for the school team.
- ✓ Time and supplies donated to local arts project – Connecting Craigmillar.

Pathway to Employment

Castlebrae High School approached the site team at the new build looking for an opportunity for a young individual who was keen to join the construction industry. He faced many barriers within his personal and school life but the school's Future Improvements Officer saw his potential.

Meetings were set up with Morrison Construction to deliver a talk on transferable skills such as timekeeping, attendance and willingness to learn. After this he was given a trial run to improve these skills within school, with the commitment that when he reached an acceptable level, the site team would source him an opportunity within our supply chain. After four weeks there was a massive change and Bricklaying contractor, Lesterose took him on a 2-week work trial.

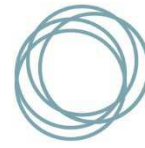
His hard work and positive attitude paid off as he was taken on as a labourer for one year. Although he was offered an apprenticeship, he found alternative long-term employment because of his experience, resulting in a real positive destination.

SOCIAL IMPACT ON CASTLEBRAE COMMUNITY CAMPUS

Community Engagement: Castlevale Youth Development Club

- ✓ Initially **almost £1300 was donated** to the local youth football club to invest in warmer winter gear and new equipment such as smaller goals for practice.
- ✓ Further support was then given to **renovate the Clubhouse**, bringing the previously dilapidated changing rooms back to life, providing a suitable facility for local young people. As well as providing materials and much-needed labour using the contractor's well-established volunteering scheme, a number of specialist subcontractors were gathered to provide assistance. This was a real collective effort across the supply chain! Together: Arthur McKay for electrical works and heating; Keyes Bros for plasterboard and joinery; Lesterose for blockwork; Altro for donating flooring and wall protection; Veitchi for installing flooring; Space Zero for donating hand dryers; Dunedin for all taping and decoration; Alegeco for donating changing benches and Miller Fabrications for metal cladding security doors.





grassmarket
community project

CHARITY PARTNER: **GRASSMARKET COMMUNITY PROJECT**

We're keen to ensure that community benefits are realised outwith just the projects we are working on and are proud to have been working in partnership with local Edinburgh Charity – Grassmarket Community Project (GCP) since 2015 as they provide support to almost 500 members – some of the Capital's most vulnerable citizens.

With the help of our main Sponsor, Morrison Construction, in 2022 we held our fourth Charity Golf Day. Many of our supply chain partners supported the event generously by fielding a team on the day and/or supplying raffle and auction prizes. The event raised an amazing £16,500 and when added to the sums raised at previous events, means that we have now handed over more than £75k to GCP – a fantastic amount which has been reinvested into 6 social enterprises managed by GCP, as well as funding the development of a counselling room and service for members.

We also support the use of the charity's venue as a meeting space, and the wood workshop social enterprise has benefited from trees felled from our sites and opportunities for using the catering social enterprise on construction sites and we donate annually to the GCP's Christmas Appeal. In addition, using company volunteering days, our Communications Manager, Joanne has been a Director on the Board of GCP for 6 years, further cementing our relationship with this fantastic charity.

“As a charity we're all about social impact, and it's great to see that Hub and its supply chain shares this ethos. I'd like to thank Hub for the support it's provided over the years. I can't overstate the difference its made and the number of lives that have been changed as a result of this partnership.”

Jonny Kinross, (former) Chief Executive, GCP

SUPPORTING SOCIAL ENTERPRISE

The shipping containers, being used by local artists and entrepreneurs as part of the Leith Meanwhile project, were fitted out by Edinburgh based construction social enterprise, Rebuild. Rebuild supports individuals with barriers to work such as ex-offenders, formerly homeless, sufferers of PTSD and other mental health difficulties. In Leith, five trainees were paid whilst they learned new skills on site.



We're incredibly proud to have supported Rebuild in its first live project. Knowing that the trainees have grown in skills, experience and confidence during their time on site and that four of the five are now in employment, is fantastic and is another example of how such projects are creating a lasting legacy.

“The positive financial implications to the local economy made by supporting people with barriers to work are huge. For example; it is conservatively estimated that the savings made by keeping one individual with a history of offending out of the criminal justice system are around £50,000 per year, factoring in the cost to keep a person in prison along with social work, legal aid and numerous other associated expenses. We work with our trainees with the view to helping them change their path and learn new skills that will help them towards a brighter more prosperous future.”

Paul Hunter, Founder - rebuild

SOCIAL & ECONOMIC VALUE DELIVERED

Castlebrae
Community
Campus

£9.4m





TESTIMONIALS



“As a Social Enterprise we aim to create real jobs for the people that Apex Scotland supports, those who are often deemed disadvantaged in the employment market. Securing contracts like these on Hub South East projects allows us to offer more opportunities to those who need them.”

Patrick – Apex Scotland – Awarded cleaning contracts on Allermuir and Pennywell Centres during construction.

“On the back of work secured, we’ve been able to employ more staff and in turn, take on more work. Our employment strategy is very much focussed on local people and the majority of our workforce is Scottish.”

Andrew – Castle Building Services
Queensferry High School Project

“Being part of the Hub supply chain provides us with business opportunities which enable us to sustain and grow our business during times of economic uncertainty.”

JMS Plant Hire – SME on James Gillespie’s High School project

“I very much appreciate this opportunity. When I started my placement I did not expect to be offered full time employment prior to my placement ending. I’m really excited for the future.”

Cristina –work placement on Royal Ediburgh Campus

“My work placement with Hub South East has been not only a great learning experience, but it helped me gain a better understanding of the overall way the Hub programme works to improve the lives of people by giving them better spaces and facilities.

“It has helped me gain an idea of what kind of work I would like to go into after university and has given me valuable skills for the future.”

Emily – 5th Year Pupil on a Communications Assistant work placement in Hub South East’s Office

Find out more at our website:
www.hubsoutheast.co.uk

Hub South East Scotland Ltd
8 Melville Street
Edinburgh EH3 7NS
T. 0131 226 0900
E. mail@hubsoutheast.co.uk
www.hubsoutheast.co.uk

